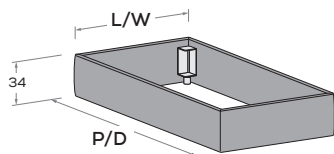
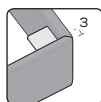


Sommier R09

R09 divan bed

Rete posizionabile a 2 altezze diverse (filo giroletto o più bassa di 10 cm).

Mattress base with 2 different height settings (base flush with bed surround or 10 cm below).



Sfoderabile.
Removable covers.

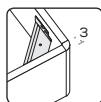
RETE / MATERASSO MATT. BASE / MATTRESS		L/W	H	P/D
80 x 190	200	88	34	199 209
90 x 190	200	98	34	199 209
100 x 190	200	108	34	199 209
120 x 190	200	128	34	199 209
160 x 190	200	168	34	199 209

Sommier R28-S

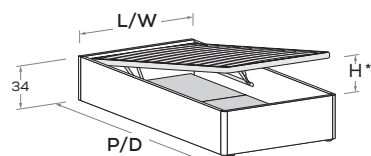
R28-S divan bed

Rete a doghe con telaio in metallo, dotato di meccanismo di sollevamento ammortizzato frontale.

Slatted base with metal frame, featuring soft-close front-lift mechanism.



* H APERTURA per rete da 190: 93 cm
H APERTURA per rete da 200: 107 cm
OPENING H for 190 mattress base: 93 cm
OPENING H for 200 mattress base: 107 cm



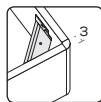
RETE / MATERASSO MATT. BASE / MATTRESS		L/W	H	P/D
80 x 190	200	88	34	199 209
90 x 190	200	98	34	199 209
120 x 190	200	128	34	199 209

Sommier W28-S

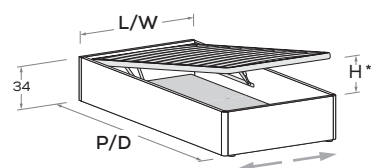
W28-S divan bed

Rete a doghe con telaio in metallo, dotato di meccanismo di sollevamento ammortizzato frontale.

Slatted base with metal frame, featuring soft-close front-lift mechanism.



* H APERTURA per rete da 190: 93 cm
H APERTURA per rete da 200: 107 cm
OPENING H for 190 mattress base: 93 cm
OPENING H for 200 mattress base: 107 cm



Ruote auto-frenanti
incassate unidirezionali.
Recessed single-direction
self-lockable wheels.

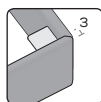
RETE / MATERASSO MATT. BASE / MATTRESS		L/W	H	P/D
80 x 190	200	88	34	199 209
90 x 190	200	98	34	199 209

Sommier R29

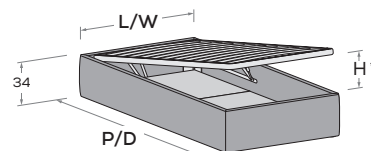
R29 divan bed

Rete a doghe con telaio in metallo, dotato di meccanismo di sollevamento ammortizzato frontale.

Slatted base with metal frame, featuring soft-close front-lift mechanism.



* H APERTURA per rete da 190: 93 cm
H APERTURA per rete da 200: 107 cm
OPENING H for 190 mattress base: 93 cm
OPENING H for 200 mattress base: 107 cm



Sfoderabile.
Removable covers.

RETE / MATERASSO MATT. BASE / MATTRESS		L/W	H	P/D
80 x 190	200	88	34	199 209
90 x 190	200	98	34	199 209
120 x 190	200	128	34	199 209
160 x 190	200	168	34	199 209

Sommier con rete alzante laterale

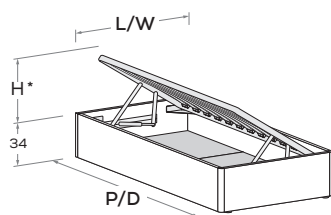
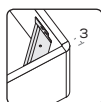
Divan beds with side-lift mattress base

Sommier R38-S

R38-S divan bed

Rete a doghe con telaio in metallo, dotato di meccanismo di sollevamento ammortizzato frontale.
Slatted base with metal frame, featuring soft-close front-lift mechanism.

- * H APERTURA per rete da 80: 31 cm
- H APERTURA per rete da 90: 35 cm
- OPENING H for 80 mattress base: 31 cm
- OPENING H for 90 mattress base: 35 cm



RETE / MATERASSO MATT. BASE / MATTRESS		L/W	H	P/D
80 x	190 200	88	34	199 209
90 x	190 200	98	34	199 209

Sommier W38-S

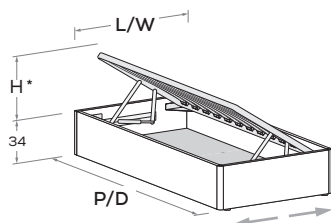
W38-S divan bed

Rete a doghe con telaio in metallo, dotato di meccanismo di sollevamento ammortizzato frontale.
Slatted base with metal frame, featuring soft-close front-lift mechanism.

- * H APERTURA per rete da 80: 31 cm
- H APERTURA per rete da 90: 35 cm
- OPENING H for 80 mattress base: 31 cm
- OPENING H for 90 mattress base: 35 cm



Ruote auto-frenanti
incassate unidirezionali.
Recessed single-direction
self-lockable wheels.



RETE / MATERASSO MATT. BASE / MATTRESS		L/W	H	P/D
80 x	190 200	88	34	199 209
90 x	190 200	98	34	199 209

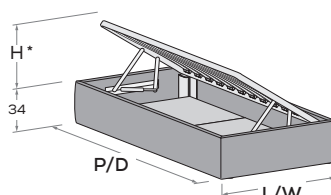
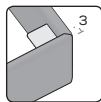
Disponibile con ruote.
Available with wheels.

Sommier R39

R39 divan bed

Rete a doghe con telaio in metallo, dotato di meccanismo di sollevamento ammortizzato frontale.
Slatted base with metal frame, featuring soft-close front-lift mechanism.

- * H APERTURA per rete da 80: 31 cm
- H APERTURA per rete da 90: 35 cm
- OPENING H for 80 mattress base: 31 cm
- OPENING H for 90 mattress base: 35 cm



RETE / MATERASSO MATT. BASE / MATTRESS		L/W	H	P/D
80 x	190 200	88	34	199 209
90 x	190 200	98	34	199 209

Sfoderabile.
Removable covers.