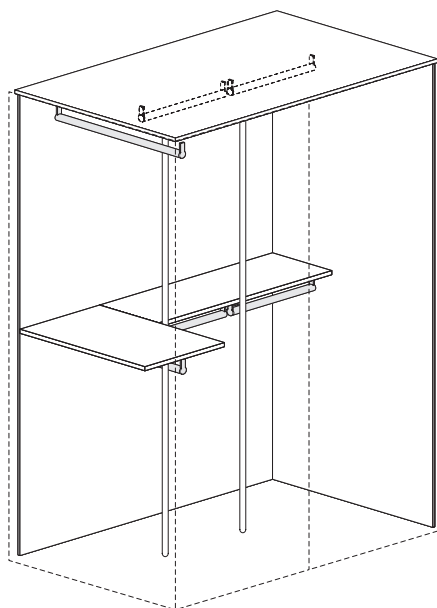
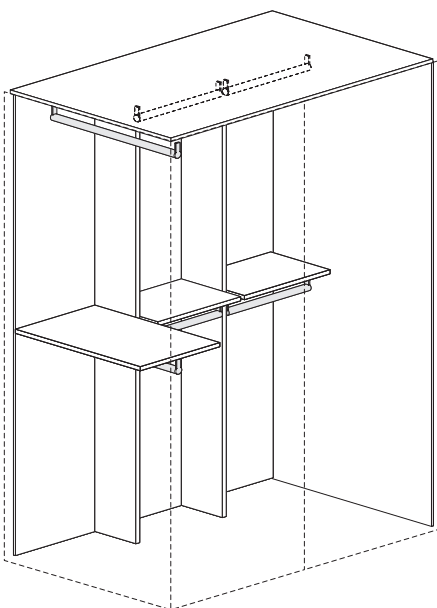


CABINOTTO CABÌ INTERNO A SPALLA

CABÌ WALK-IN CLOSET WITH LOAD-BEARING SIDE INTERIOR

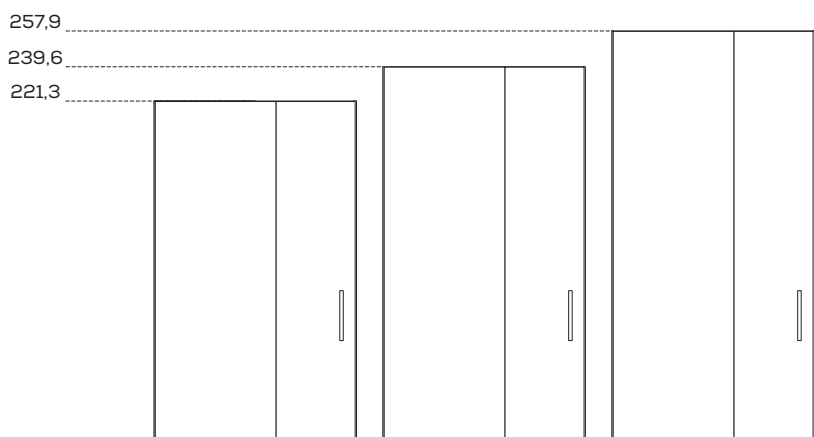
CABINOTTO CABÌ INTERNO PALÙ

CABÌ WALK-IN CLOSET PALÙ INTERIOR



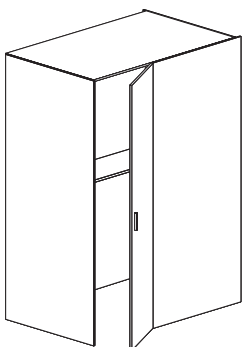
ALTEZZE

HEIGHTS



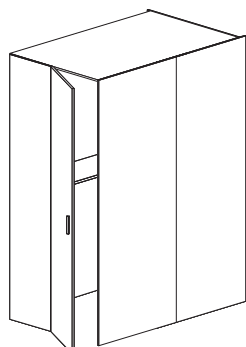
TIPOLOGIE DI APERTURA

OPENING SYSTEMS



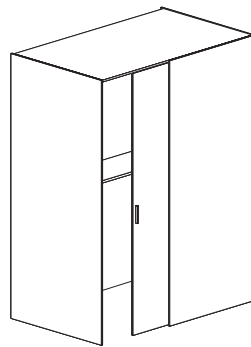
Apertura frontale battente
(Per cabina L 135,3-165,3 cm)

Hinged front opening
(For 135,3-165,3 cm-wide closet)



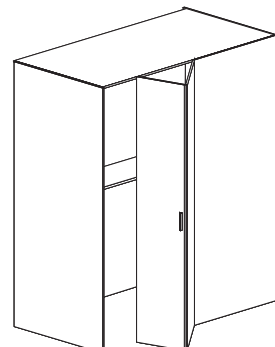
Apertura laterale battente
(Per cabina L 135,3-165,3 cm)

Hinged side opening
(For 135,3-165,3 cm-wide closet)



Apertura frontale scorrevole
(Per cabina L 135,3-165,3-195,3 cm)
con chiusura Softspace

Sliding front opening
(For 135,3-165,3-195,3 cm-wide
closet) with Softspace closing system



Apertura frontale pieghevole
(Per cabina L 195,3 cm)

Folding front opening
(For 195,3 cm-wide closet)

LARGHEZZE E PROFONDITÀ

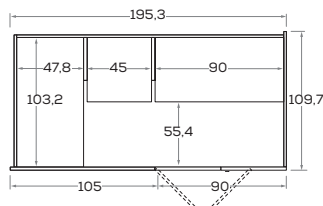
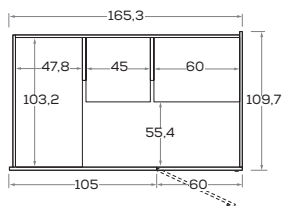
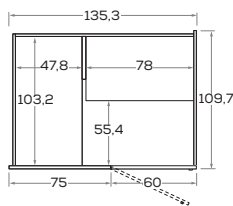
WIDTHS AND DEPTHS

CABINOTTO CABÌ INTERNO A SPALLA

CABÌ WALK-IN CLOSET WITH LOAD-BEARING SIDE INTERIOR

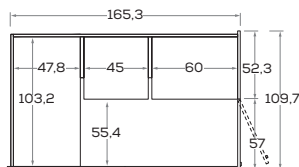
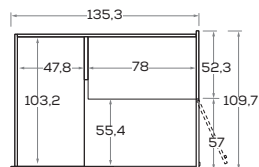
Cabine apertura frontale battente/pieghevole

Walk-in closets with hinged/folding front opening



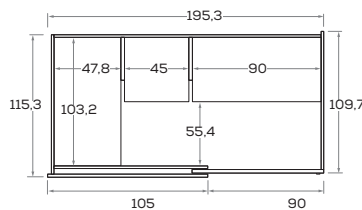
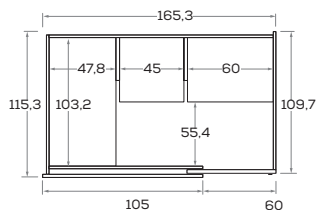
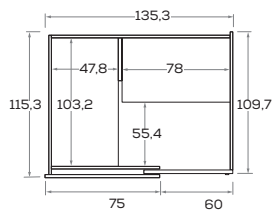
Cabine apertura laterale battente

Walk-in closets with hinged side opening



Cabine apertura frontale scorrevole

Walk-in closets with sliding front opening

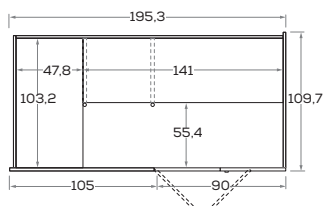
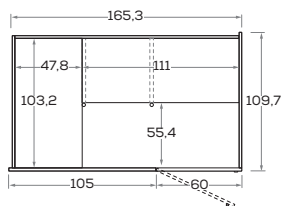
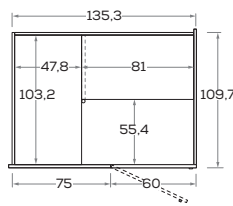


CABINOTTO CABÌ INTERNO PALÙ

CABÌ WALK-IN CLOSET PALÙ INTERIOR

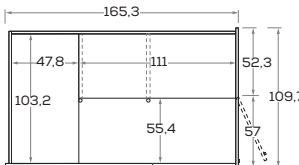
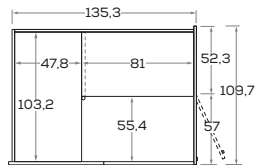
Cabine apertura frontale battente/pieghevole

Walk-in closets with hinged/folding front opening



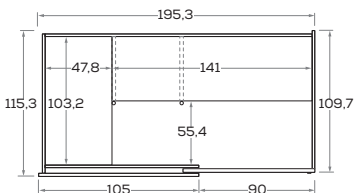
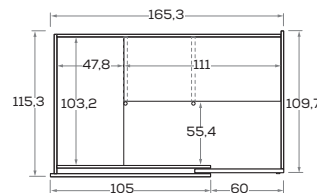
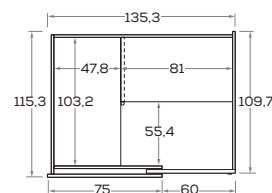
Cabine apertura laterale battente

Walk-in closets with hinged side opening



Cabine apertura frontale scorrevole

Walk-in closets with sliding front opening



Le informazioni contenute nelle presenti schede tecniche sono indicative. Eventuali differenze con il listino in vigore non costituiscono motivo di contestazione.

The information given in this technical sheet are indicative. Any discrepancies with the price list currently in force cannot be cause for complaint.